

A photograph of a modern, multi-story office building with a glass and steel facade. The building is partially obscured by a large, stylized graphic overlay consisting of thick, curved lines in red, blue, and yellow. The sky is clear and blue.

Nankang IC Design Incubation Center

A photograph of a modern, curved office building with a glass and steel facade. The building is partially obscured by a large, stylized graphic overlay consisting of thick, curved lines in red, blue, and yellow. The sky is clear and blue.

Southern Taiwan IC Design Incubation Center



Nankang IC Design
Incubation Center



Southern IC Design Research
Incubation Center



INDUSTRIAL DEVELOPMENT BUREAU,
MINISTRY OF ECONOMIC AFFAIRS
經 濟 部 工 業 局



南港IC設計育成中心
Nankang IC Design Incubation Center



南部IC設計研發培育中心
Southern IC Design Research Incubation Center

Nankang IC Design Incubation Center



Southern Taiwan IC Design Incubation Center



Co-create the
Smart Electronics
Innovation Ecosystem



Contact us



NanKang IC Design Incubation Center

Tel : (02)2655-7155#320

Fax : (02)2655-7115

Address : 10F., No. 3-2, Park St., Nangang Dist., Taipei City
115603, Taiwan (R.O.C.)

(Nankang Software Park 2 ,10F., Building H)

Executive Team : Industrial Technology Research Institute
Electronic and Optoelectronic System Research Laboratories
E-mail : PeggyHuang@itri.org.tw



Southern Taiwan IC Design Incubation Center

Tel : (07)970-0910#33

Fax : (07)970-0920

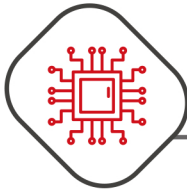
Address : No.2, Fusing 4th Rd., Cianjhen Dist., Kaohsiung
City (Kaohsiung Software Technology Park)

Executive Team : Southern Taiwan Industry Promotion Center
E-mail : ftn6226@g-mail.nsysu.edu.tw

Technology Focused



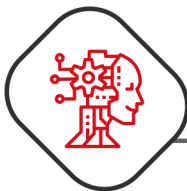
IC design, Artificial Intelligence of Things (AIoT) applications (e.g., smart health care, smart transportation, and smart living), AI, and System integration companies.



IC/SoC/FPGA Design



IoT



AI



Communication



Embedded Software

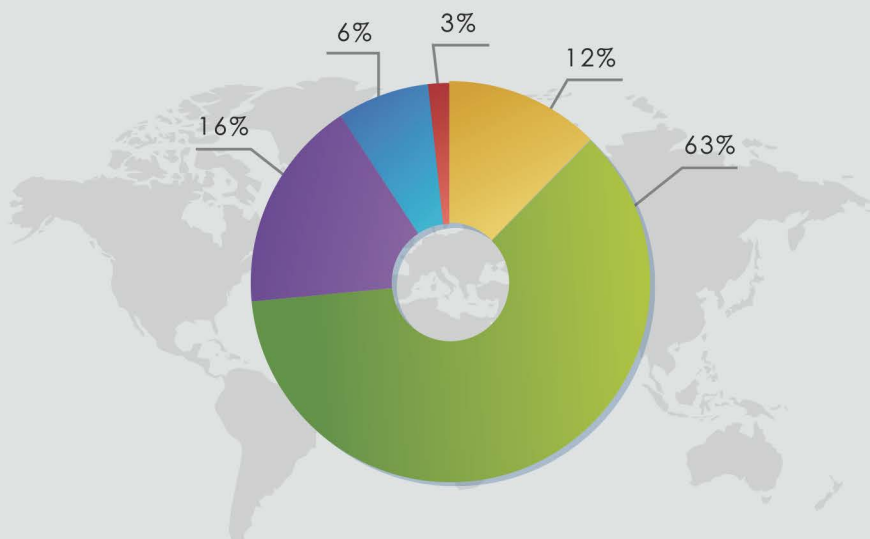


ICT system design
/integration

Technology Distribution



- ICT Systems/ Modules
- IC Design
- IoT
- AI
- Others



Technology Distribution (Data listed as of July 30,2022)

Successful Stories



IC Design

- * ELAN Microelectronics Corp. "Touchscreen chip and touchpad module R&D solutions"
- * SYNC Power Corp. "Power management IC, MOSFET, and ESD Protection"
- * Terminus Technology Inc. "USB control IC"
- * Sounds Great Co., Ltd. "Motion Microchip on Semiconductor Dynamic Speakers (SDS) and Semiconductor micromotors (SM) "
- * Bravotek Electronics. "Power management and mixed signal IC"
- * PixArt Imaging Inc. "CMOS image sensor application IC"

AI Applications

- * aetherAI "Digital Pathology Transformation, Medical Image AI Adoption, BioPharma Service"
- * KaiKuTek Inc. "Touchless Gesture Recognition Solution, including single die Soc, Gesture Collection/Training"

Modules/System Integration

- * Cognito Health "Contact-free, continuous patient monitoring solutions"
- * MWG Technologies Co., Ltd. "Smart care solution"
- * LILEE Systems "Transportation Safety Solutions for rail, bus, and autonomous vehicles"
- * WeMo Corp. "E-Scooter sharing"
- * EMpen Technology Corp. "Digitizer solution"
- * Taiwan Aulisa Medical Devices Technologies, Inc. "Wireless, Wearable, Continuous Vitals Monitoring & Alarm Systems"
- * Liscotech System Co., Ltd. "Machine vision designs design, products & solution"
- * Li-Hong Science and Technology Co., LTD. "Explosion-proof energy-saving lamp and secure IoT equipment"
- * Compal Electronics, Inc. "Computer and peripheral design, manufacturing, and integrated applications"

◆ Qualifications

- Startup or Pre-IPO company with key technology.
- Foreign company which is registered as subsidiary company or new entity in Taiwan.
- 4 years is the maximum of occupancy. The extensions should apply before three months of moving out, each application will be extended for 1 year.

◆ Environment

Providing flexible office space, fiber optical network, Wi-Fi, door access control, vehicle control, 24 hours property management and security patrols.



Co-location

- ✖ Uninterruptible power supply
- ✖ Automatic constant temperature and humidity control system
- ✖ Entry access control

Office spaces

- ✖ Offering Flexible space and charging for all types of startup companies





Coworking space

- ✦ A cost-effective and convenient option for a small team



Measurement lab

- ✦ Supplying varieties of measurement instruments and lab



Conference room

- ✦ Professional conference rooms with Wi-Fi and projector



Amenities

- ✦ NanKang Software Park provides a number of amenities including banks, restaurants, clinic, gym, post office, delivery service and convenient store...

◆ Transportation & Location

- Located on the 9th and 10th floor, Nankang Software Park, Building H.
- Junction of Taiwan Train Railway(TRA) + Taipei Metro (MRT) + Taiwan High Speed Rail (THSR).
- 2 Highways passing through NanKang
 - 1 National Freeway No.1 ,
 - 3 National Freeway No.3



◆ Qualifications

- Independent companies (excluding subsidiary companies) approved by the Ministry of Economic Affairs.
- The companies may apply to set up office in the incubation center for a minimum one year and maximum three years. Those who wish to apply for extensions must submit the application document three months prior to the expiry date. Extension is granted once the application document is approved with at least one year or maximum two years extension.

◆ Environment

The Southern Taiwan IC Design Incubation Center offers different types of office spaces according to company' s operation plans and needs; and provides wireless internet services in the entire incubation center area. Additionally, the incubation center offers services including security, access control systems, conference rooms, product exhibition area, and administrative support.



Office space:

- ✦ The office space is an independent space that can accommodate up to dozens of people. Rental price please refer to the announced rental fee.



Conference room:

- ✦ The office space is an independent space that can accommodate up to dozens of people. Rental price please refer to the announced rental fee.



Product solution exhibition area:

- ✦ The product solution exhibition area displays the company products match with the exhibit theme or feature products and achievements.



Rest space:

- ✦ Comfortable lounge and equipped facilities are offered for business conference, interactions, and relaxation.

◆ Transportation & Location

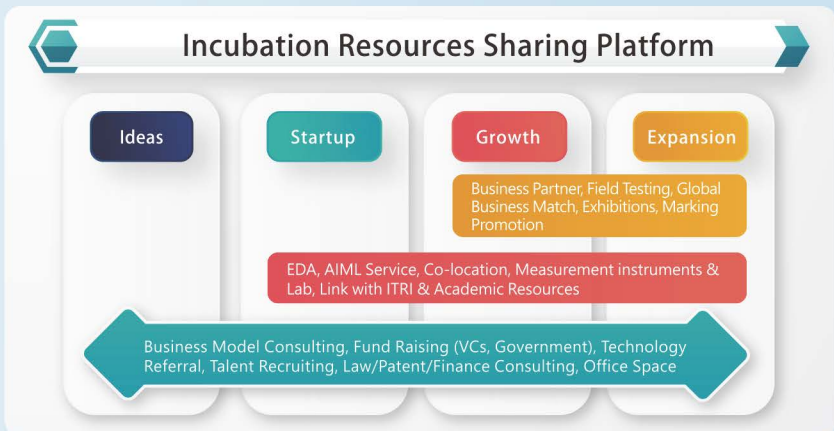
- Located on the 1st, 6th, and 7th floor of Building B, Kaohsiung Software Park B
- Can be reached via the Kaohsiung Metro (walk for 13 minutes from Exit 4 of the Shihjia Station (R7)) and Kaohsiung Light Rail (walk for 1 minute from the Software Technology Park Station (C7)) .
- Search for "Southern IC Design Incubation Center, Industrial Development Bureau, Ministry of Economic Affairs" on Google for direction to the incubation center.



Incubation Resources



NKIC and STIC merge each incubation resources to build up sharing platform which can support each stage of startup companies, so that maximize the power of growth.



9 Special Resources

◆ Co-location

We offer N+1 redundant, fault-tolerant architecture and environment, network security service, exclusive fiber-optic internet and IT consultation service. Members don't need to build another server room and help members save the cost of rental, electricity and management fees.

◆ EDA on Demand

Incubation Center partners with major EDA vendors (e.g., Cadence and Mentor) which provide incubation programs for IC design startups, so that can lower the R&D expense.

◆ QuantumCloud AIML Service

We partner with main company to provide customized AI Machine Learning computing services. It's can lower startup cost and technical entry barriers. The service consists of localized storage platform, faster transmission, and high efficiency. Compared with foreign competitors, we offer competitive prices and flexible support services.

3 major features of the QuantumCloud AIML



Easy to Use

One click to open the GPU speed of Jupyter Notebook



Flexible Usage

Choose a suitable development environment based on usage situations and scenarios



Competitive Price

Get high performance GPU with low cost

◆ ITRI R&D Resources

Based on startup's needs, we connect with ITRI resources such as providing technology transfer and customized services to improve the development speed and gain the market advantage.



◆ ARM-IP Services

We partner with arm to provide IC design startups with arm flexible access (AFA) program which is a discount plan. Eligible startup can get free access to the IP, tools, training and support until IC tape-out. Qualifications are as follows:

- Privately owned with funding less than 5 millions US dollars.
- Revenue less than 1 million US dollars.

Benefits of Arm Flexible Access for Startups



Helping startups to develop innovative SoCs

- Early-stage semiconductor startups developing SoCs
- Privately owned with funding less than \$5M
- Revenue less than \$1M



No cost access to the world's most widely used chip design IP

- Free access to the IP, tools, training and support in the Standard Tier of Flexible Access
- Experiment, design and then tape-out prototype silicon without paying Arm fees



Supporting startup innovation

- Allows startups to conserve cash and accelerate their designs, leading to a faster time to market
- Drives VC funding through the confidence of using the most trusted IP
- Arm IP and the Arm Ecosystem provide drive startup success

◆ Joint Exhibitions

The two incubation centers co-organize exhibitions, such as InnoVEX, AIoT Taiwan, and Taiwan Innotech Expo for startups to display products and technical capabilities. In addition, the centers may invite the media to the expo to gain publicity and press coverage, expanding more sales channels.

◆ Local Connections

- Resources for local businesses: After long dedication to the local IC industries and transformations in northern and southern Taiwan, our vision is to upgrade local industries by providing interdisciplinary cooperation and solving the R&D needs of the clients.
- Resources for local government: The incubation centers and local governments have a favorable relationship that allows our clients to seek opportunities for cooperation with local industries.

◆ International Business Matchmaking

The incubation centers continue to interact with overseas innovation and entrepreneurship incubation units, such as ECOLABS (in Singapore), Tiger Accelerator (in the Netherlands), and UPSCALE (in the Philippines). In bilateral discussions, domestic and international incubation centers aim to advance cooperation in innovative development, collaborative mechanisms, and interdisciplinary fields in ICT, AIoT startup information, technical exchange, business matchmaking, and sales channel expansion.

◆ Partners of the Incubation Centers

• Taiwan-Japan Industrial Collaboration Promotion Office

Taiwan-Japan Industrial Collaboration Promotion Office, specializing in collaborations between Taiwanese and Japanese industries, is highly familiar with the cooperation network of Japan's industry, government, and research sectors. Through the Japanese business network worldwide, the office identifies the needs of Japanese companies, and Taiwan's research institutions and industries offer assistance, facilitating cross-border and novel technological exchange and collaboration.

• ITRI International Inc.

Located in Silicon Valley, California, ITRI International Inc. has managed its industrial cooperation platform for many years, establishing a network with renowned universities, research institutions, startups, enterprises, venture capital, and industries in America. This company focuses on promotion and collaboration between industries in Taiwan and North America. Additionally, designated personnel are in charge of assisting startups to cooperate with interdisciplinary fields in technical exchange and business proposals.

◆ Academic R&D Resources

The incubation centers gather academic resources from universities throughout Taiwan; namely, the National Taiwan University, National Yang Ming Chiao Tung University, National Sun Yat-sen University, National University of Kaohsiung, National Taiwan University of Science and Technology, National Taipei University of Technology and National Kaohsiung University of Science and Technology.

Academic resources are provided for the aforementioned institutions based on their needs (e.g., new employee orientation, technical counseling, R&D counseling, lab resources, and referrals), driving industry-academic sector collaboration and expanding industries' technical R&D capacity.



General resources



Fund Search

Counseling applications of the government subsidy program, venture capital fund matchmaking, and GISA registration referral.



Technology Referral

ITRI technical support, academic R&D resource bridging, industry transformation counseling, and professional technological development counseling and discussion.



Talent Matchmaking

Talent recruitment and matchmaking, campus talent recruitment briefing, and in-company talent training.



Market Expansion

Industry exchange and business matching activity, sales channel referral, and exhibition.



Startup Counseling

Legal and financial professional counseling, business management counseling, patent counseling, and industry news.